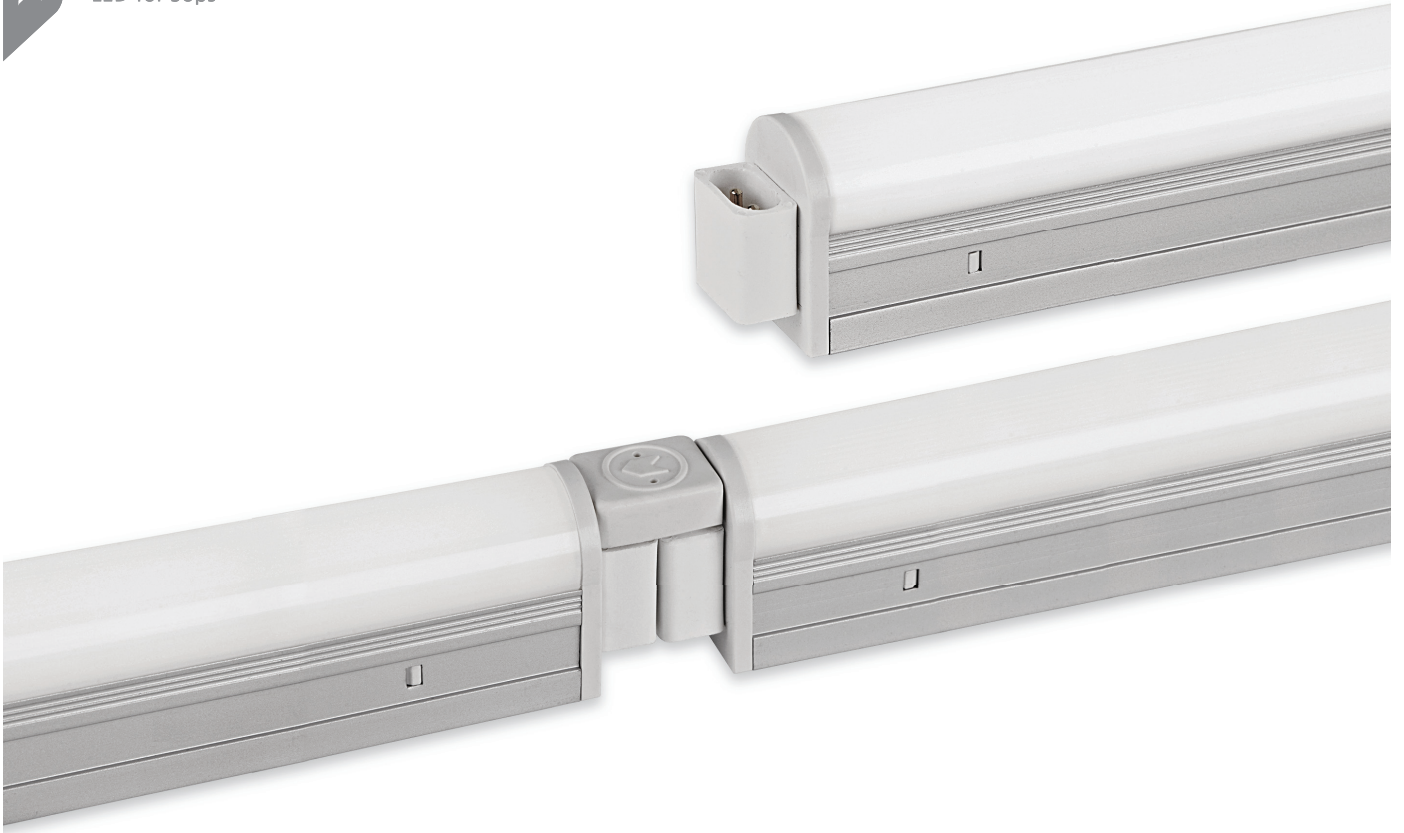


FEELED SlimLamp

LED for Sops

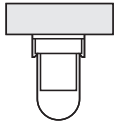


FEELED SlimLamp

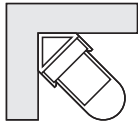
An evolutionary alternative to our world renowned T5 fluorescent fixture, Feelux introduces the SlimLamp LED. Utilizing the same body and quick connectors of its predecessor, the SlimLamp LED stays true to its heritage. Current customers simply replace their existing Fluorescent SlimLamp with the new LED version, making it easy to use in existing environments, displays, and cabinets. New customers benefit from over ten years of quality and performance that made the SlimLamp and continue on in the SlimLamp LED.



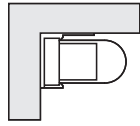
Installation



Standard Mounting



Corner Mounting



Angular Configuration

Accessories

Ⓐ Connecting cables

DLPTC	DLPTC1	DLPTC2	DLPTC4	DLPTC6
150mm(6inch)	300mm(1feet)	600mm(2feet)	1200mm(4feet)	1800mm(6feet)

Ⓑ Direct connector

DLCLPL/T

Ⓒ Power cord

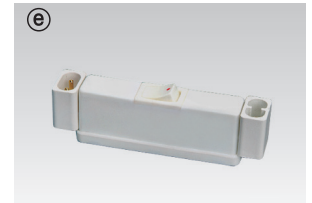
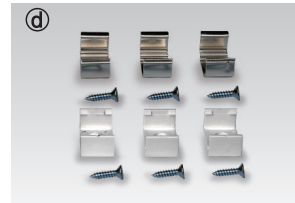
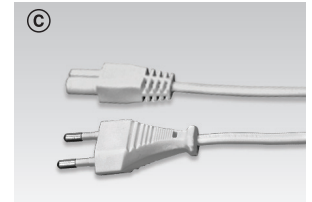
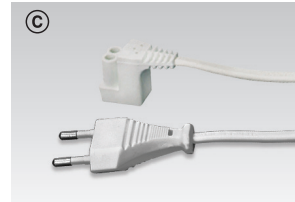
DLPC230/T, DLPC230/SM2/T (straight type)

Ⓓ Mounting bracket

SL-BRACKET (180°), SL-BRACKET1 (45°), SL-BRACKET2 (90°)

Ⓔ On/off switch

DLSB/T



Product Features

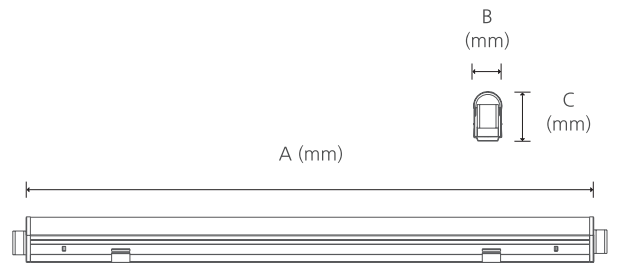
- AC power driver built in (SMPS is not needed)
- Transparent, Ivory white Diffuser
- Isolation circuit applied
- Compatible with accessories for fluorescent SlimLamp

Specification

- Frequency range : 50/60Hz
- Voltage : AC 220~240V , 100~130V
- Operating temperature : 0~50°C
- Lamp life : 30,000hr
- **Energy efficiency** 60 lm/W
- Available color : 3000K, 4000K, 6500K
- **Color rendering** Ra > 80

Notice

Max. connection : 400W
10W(40pcs), 15W(26pcs), 20W(20pcs)



Model Name	Lamp power (W)	A (mm)	B (mm)	C (mm)
LSL10A4B23F/T	10	595	22.6	37.5
LSL15A4B23F/T	15	895	22.6	37.5
LSL20A4B23F/T	20	1195	22.6	37.5