

■ PRO-10 PB | PORTABLE PIPE BEVELLER

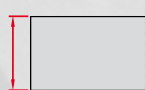
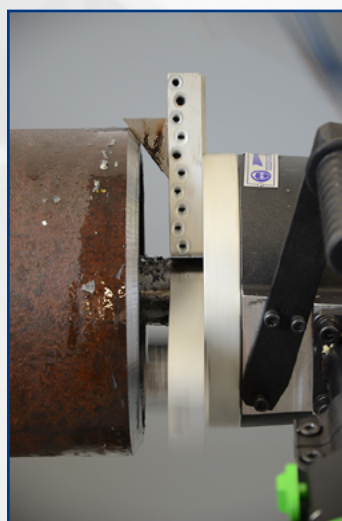


PRO 10PB is a heavy duty pipe Beveller designed for portable use in pipe machining operations.

Self-centering expandable mandrels provide quick and proper alignment to a pipe or a tube prior to machining operations.

PRO 10 PB is able to bevel, face off, ID chamfer, counterbore and J-beveling, making all these weld prep operations quick and simple.

Depending on users preferences and on site conditions PRO 10 PB machine can be operated with a high quality powerful pneumatic motor or top quality high torque electric motor.



Max. wall
thickness 15mm



ID 84-269mm
38-84 mm (option)
or 270-349mm (option)



Facing off



Pipe OD
beveling



Pipe ID
beveling



J-groove beveling
(option)

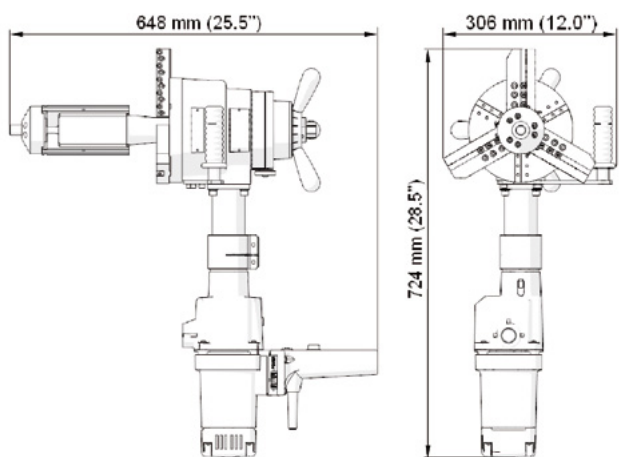
PRO 10 PB Capacities at a Glance

Wide range of accessories for multiple applications including flange facing and oval beveling.
PRO 10 PB can be equipped with optional accessories according to customers' needs and preferences.

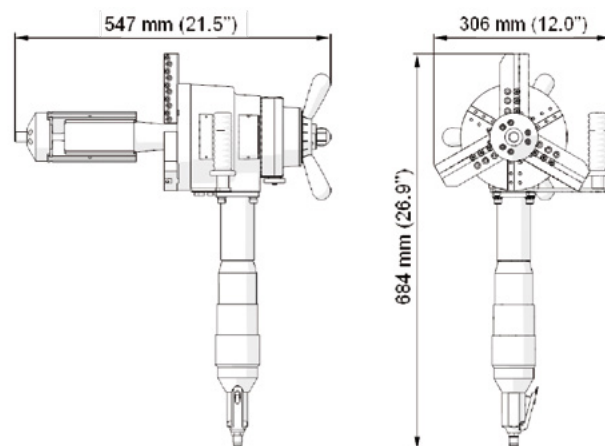


Technical specifications	PRO 10 PB with electric motor	PRO 10 PB with pneumatic motor
Electric motor	1.8 kW	-
Supply	110-120V/50-60Hz or 220-240V/50-60Hz	-
Rotational speed (nominal)	gear 1 – 12 to 29rpm	-
	gear 2 – 41 to 96rpm	-
Pneumatic drive	-	1,8kW
Air requirement	-	0,6 MPa
Air consumption	-	1750 NI/min
Rotational speed (without load)	-	17 rpm
Rotational speed (nominal)	-	9 rpm
Min ID	84mm (3.31"); 38mm - option	84mm (3.31"); 38mm - option
Max ID	269mm (10.59"); 349mm (13.74") - option	269mm (10.59"); 349mm (13.74") - option
Max OD	273mm (10.75"); 355mm (13.98") - option	273mm (10.75"); 355mm (13.98") - option
Max. wall thickness	15mm (0.59")	15mm (0.59")
Weight (incl. motor)	35.9 kg (79 lbs)	33 kg (73 lbs)

Dimensions



PRO 10 PB with electric motor



PRO 10 PB with pneumatic motor

Standard shipping set:

- PRO 10 PB (without motor, tool bits)
- Metal box
- Standard self-centering expandable mandrel for pipe ID \varnothing 84 – 269mm (3.31 – 10.59")
- Jaw blocks (1,2,3,4,5,6) and adapter – 3 sets
- Set of tools
- Coolant container
- Operator's manual

Product code: UKS-0200-10-00-01-1



OPTIONAL ACCESSORIES



Electric motor 230V
Product Code: SLN-000094

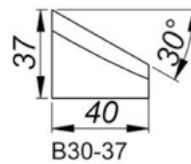
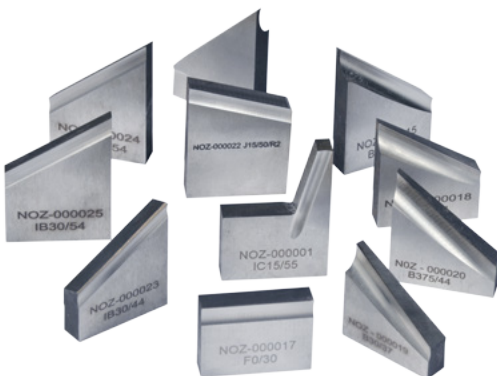
Electric motor 115V US plug
Product Code: SLN-000102

Electric motor 115V UK plug
Product Code: SLN-000120

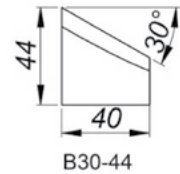


Pneumatic motor
Product Code: ZSP-0200-03-00-00-0

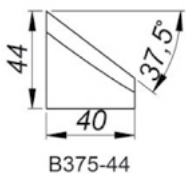
Connection set for electric motor
Product Code: ZST-0200-12-01-00-0



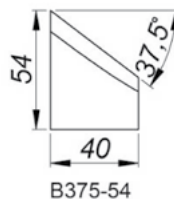
30° Beveling Tool Bit,
Height 37mm [B30/37]
Product Code: NOZ-000019



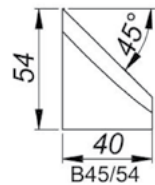
30° Beveling Tool Bit,
Height 44mm [B30/44]
Product Code: NOZ-000018



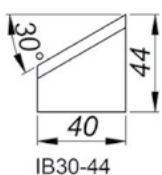
37.5° Beveling Tool Bit,
Height 44mm [B375/44]
Product Code: NOZ-000020



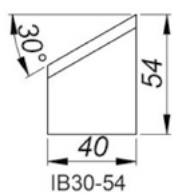
37.5° Beveling Tool Bit,
Height 54mm [B375/54]
Product Code: NOZ-000015



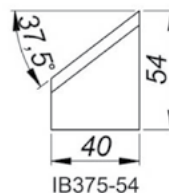
45° Beveling Tool Bit,
Height 54mm [B45/54]
Product Code: NOZ-000021



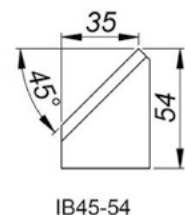
30° Internal Beveling Tool Bit,
Height 44mm [IB30/44]
Product Code: NOZ-000023



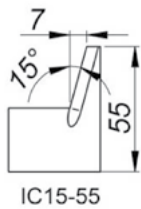
30° Internal Beveling Tool Bit,
Height 54mm [IB30/54]
Product Code: NOZ-000025



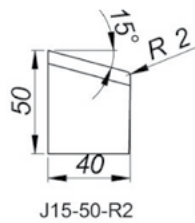
37.5° Internal Beveling Tool
Bit, Height 54mm [IB375/54]
Product Code: NOZ-000024



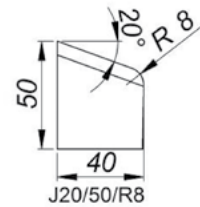
45° Internal Beveling Tool
Bit, Height 54mm [IB45/54]
Product Code: NOZ-000026



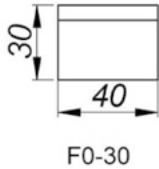
15° Internal Calibration Tool Bit, Height 55mm [IC15/55]
Product Code: NOZ-000001



15° J-Beveling Tool Bit, Height 50mm, Radius 2mm [J15/50/R2]
Product Code: NOZ-000022



20° J-Beveling Tool Bit, Height 50mm, Radius 8mm [J20/50/R8]
Product Code: NOZ-000016



Facing Tool Bit, Height 30mm [F0/30]
Product Code: NOZ-000017

Custom made versions of tool bits are available on request.
Tool bits could also be coated to increase their durability



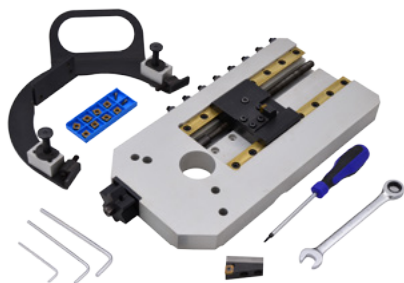
Small expanding mandrel set incl. jaws I, II, III, IV for pipe ID Ø 38 – 86mm (1.5 to 3.39")
Product Code: ZSP-0200-05-00-00-2



Extension set for OD Ø up to 355mm (14") incl. 3 steel tool holders and jaws 7, 8, 9, 10, 11
Recommended for pipe wall thickness up to 7mm (0.26")
Product Code: ZST-0200-13-00-00-2



Large expanding mandrel for pipe ID Ø 126 – 296mm (5 to 11.65") with standard jaws, and pipe ID Ø 219 – 376mm (8.62 to 14.80") with optional extension set
Product Code: TRZ-0200-50-00-00-0

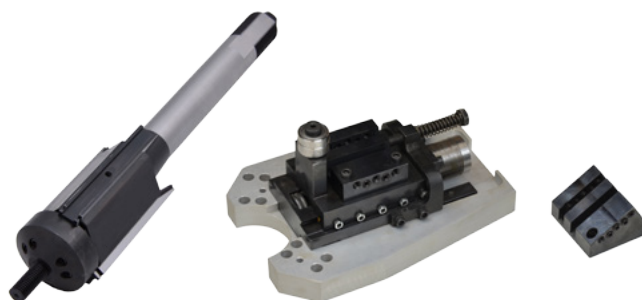


Flange facing attachment
Product Code: PRK-0447-00-00-00-2



Flange facing insert
P.Code: PLY-000210

Flange diameter	90–508 mm (3.54–20")
Automatic feed range	180.5 mm (7.11")
Diameter of rotating parts	569.4 mm (22.42")
Pipe ID	84–269mm (3.31–10.59") using the standard expanding mandrel 219–376 mm (8.62–13.74") using the large expanding mandrel
Feed per rotation	0.33 mm (0.013", with one tripper block engaged) 0.66 mm (0.026", with two tripper blocks engaged)



Oval attachment set incl. large mandrel for pipe ID Ø 126 – 296mm (5 to 11-5/8")
Product Code: PRK-0463-00-00-00-1



Air preparation set
Product Code: ZST-000021

