

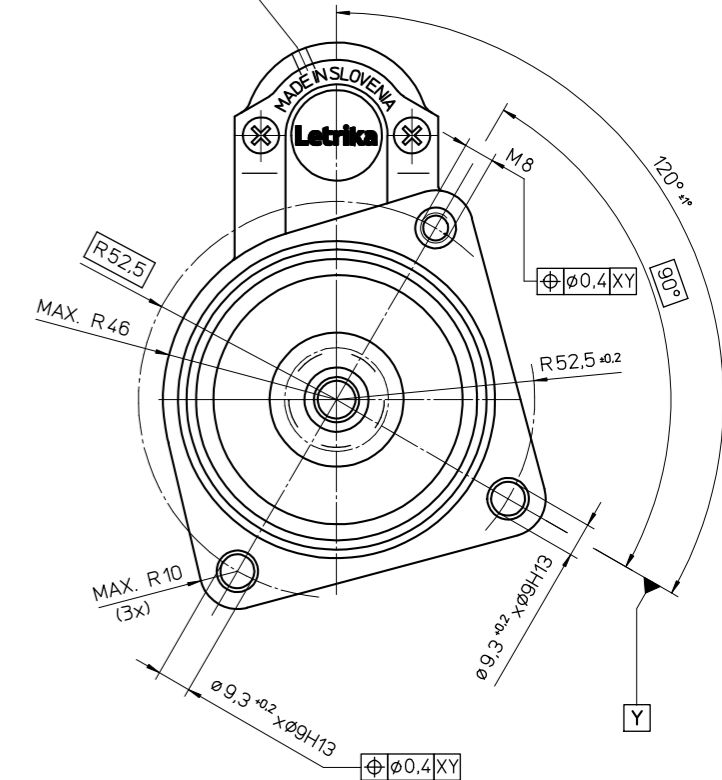
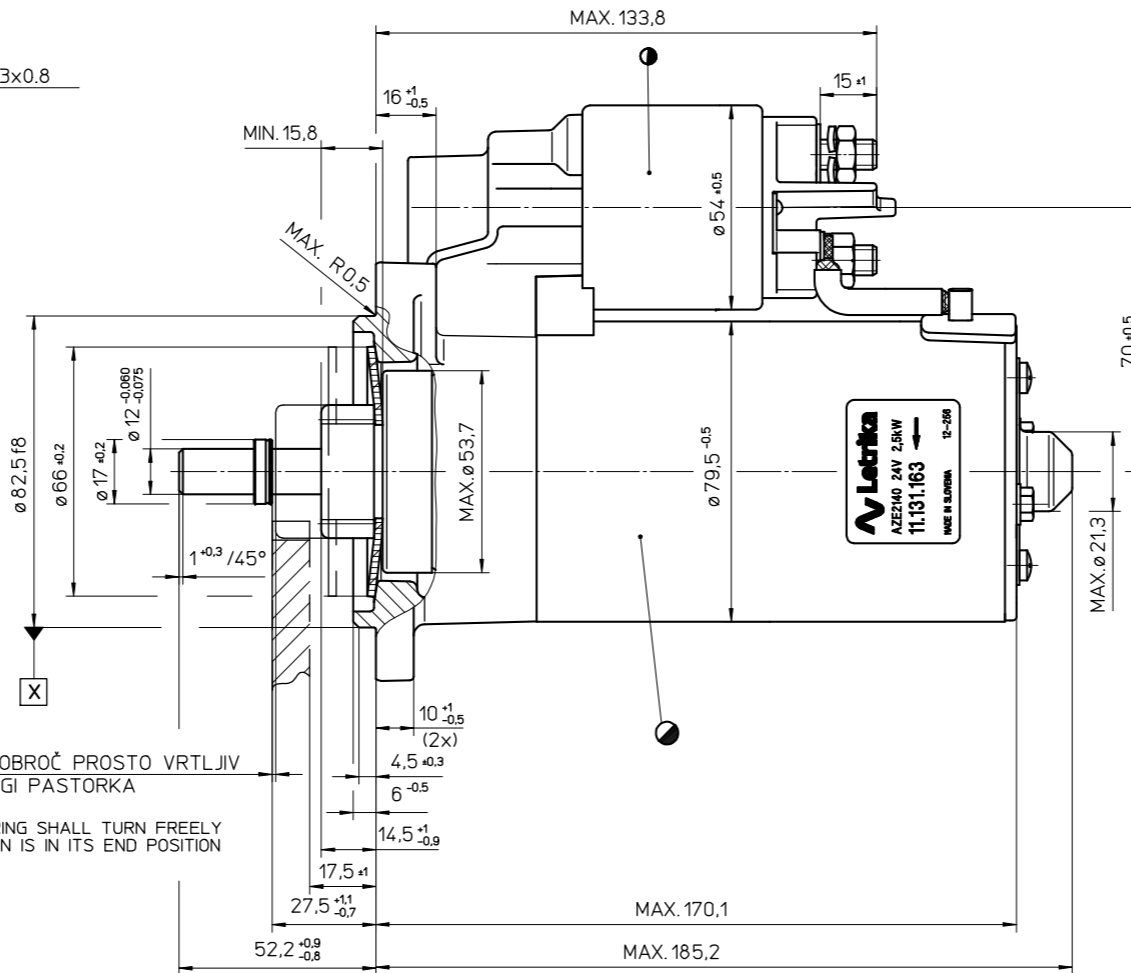
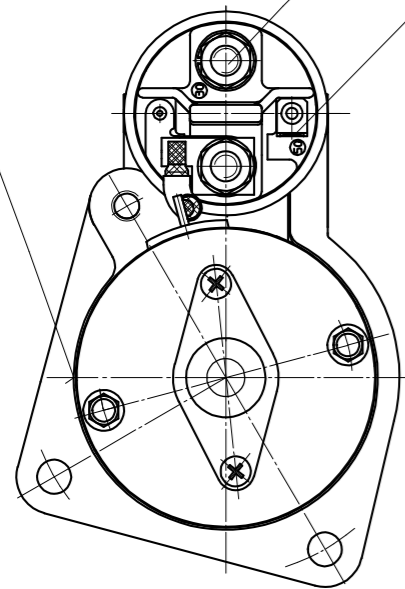
DATUM PROIZVODNJE PO CQ 08.75.01
NA PREDNJEM POKROVU
DATE OF MANUFACTURE ON DRIVE
END BRACKET (STANDARD CQ 08.75.01)

PRIKLJUČEK 30 - M8 x 1,25
TERMINAL 30 - M8 x 1,25
MAKS. MOMENT PRIVITJA MATICE 15Nm
MAX. TIGHTENING TORQUE OF NUT 15Nm

PRIKLJUČEK 50 - JEZIČEK 6.3x0.8
TERMINAL 50 - PLUG 6.3x0.8

DRENAŽA ZA HORIZONTALNO MONTAŽO
WATER DRAIN HOLE FOR HORIZONTAL MOUNTING
NA PREDNJEM LEŽAJNEM POKROVU
ON DRIVE END BRACKET

SMER VRTENJA
SENSE OF ROTATION

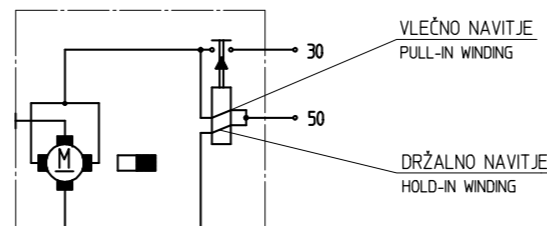


MIN. OMEJILNI OBROČ PROSTO VRTLJIV
V SKRAJNI LEGI PASTORKA
MAX. 2
MIN. LOCATION RING SHALL TURN FREELY
WHEN THE PINION IS IN ITS END POSITION
MAX. 2

TEHNIČNI PODATKI TECHNICAL DATA

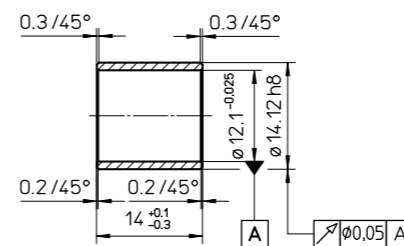
| | | |
|--|--------------------|--------------------------|
| NAZIVNA NAPETOST NOMINAL TENSION | U (V) | 24 |
| NAZIVNA MOČ NOMINAL POWER | P (kW) | 2,5 |
| SMER VRTENJA SENSE OF ROTATION | DESNA CLOCKWISE | |
| MASA MASS | m (kg) | 4,1 |
| ŠTEVILO ZOB N° OF TEETH | z | 11 |
| MODUL | m (mm) | 2,5 |
| UBIRNI KOT PRESSURE ANGLE | α (°) | 15° |
| KOREKTURNI FAKTOR CORRECTION FACTOR | x | +0,638 |
| MERA PREKO 2 ZOB DIST. ACROSS 2 TEETH | W (mm) | 12,368 ^{-0,098} |
| DELILNI PREMER PITCH DIA | do (mm) | 27,5 |
| OSNOVNI PREMER BASE DIA | db (mm) | 26,562 |
| VZNOŽNI PREMER ROOT DIA | df (mm) | 25,3 ^{-0,3} |
| TEMENSKI PREMER EXTERNAL DIA | dk (mm) | 35,3 ^{-0,2} |

VEZALNA SHEMA WIRING DIAGRAM



| | | | |
|--|--------|---------|--|
| PORABA STIKALA PRI 24V SOLENOID CURRENTS AT 24V | | | |
| VLEČNO NAVITJE PULL-IN WINDING | Iv (A) | max.30 | |
| DRŽALNO NAVITJE HOLD-IN WINDING | Id (A) | max.7,5 | |

TULKA LEŽAJNA 15.120.133 BUSH M 2:1



POVRŠINA FOSFATIRANA IN ČRNO POBARVANA
SURFACE PHOSPHATED AND BLACK VARNISHED

NE VSEBUJE AZBESTA, KADMJA, BERILJA IN AMONIJAKA
FREE OF: AZBESTOS, CADMIUM, BERYLLIUM AND AMMONIA

STARTER MOTOR

| | | | |
|-----------------|-----------------------------|------------------------|--------------------------|
| IDENT. ŠTEVILKA | NAZIV | OZNAKA | OST. NETOLER. MER |
| TOPL. OBDELAVA | OPREZJE | STANDARD - SKUP. RISBA | ZAŠOTA |
| SESTAVL. | 07-FAB-02PRE M | SPREH. | 1 2 3 4 5 6 7 8 9 0 |
| PREGL. | 07-FAB-02PRE M | ZNAK. NR. | ZR ZR |
| ODOBRL. | 11-MR-02 VRTILOVEI ŠT. OBN. | 10422 32397 59997 | |
| STAND. | 11-MR-02 VNEŠNJI DATUM | 10302 300805 3102013 | |
| OŠTEV. | PODPIS | KOŽLJH KOŽLJH | |
| NAZIV | OZNAKA | DODATNI OPIS | DZI IDENT. ŠT. SESTAVA |
| ZAGANJALNIK | AZE2140 | 24V 2,5kW z11 PRE | 11.131.163 |
| FILE: | | | AT |
| STAT. | POSKUSNI | REDNI | KLASIFIKACIJSKA ŠTEVILKA |
| DAT. | | | 0 MERLO |
| PODP. | | | SKUPINSKA RISBA |
| | | | 11 |

ZAGANJALNIK MORA USTREZATI QC 11.920.287
STARTER MOTOR MUST CORRESPOND QC 11.920.287

VSAK PRENOS TRETIJA OSEBI ALI UPORABA V NEODPOVIRNE NAMENE NI DOVOLJENA PO ZAKONU O AVTORSKI PRAVICI
DO NOT SCALE

ARJUN 0071
AZE2140