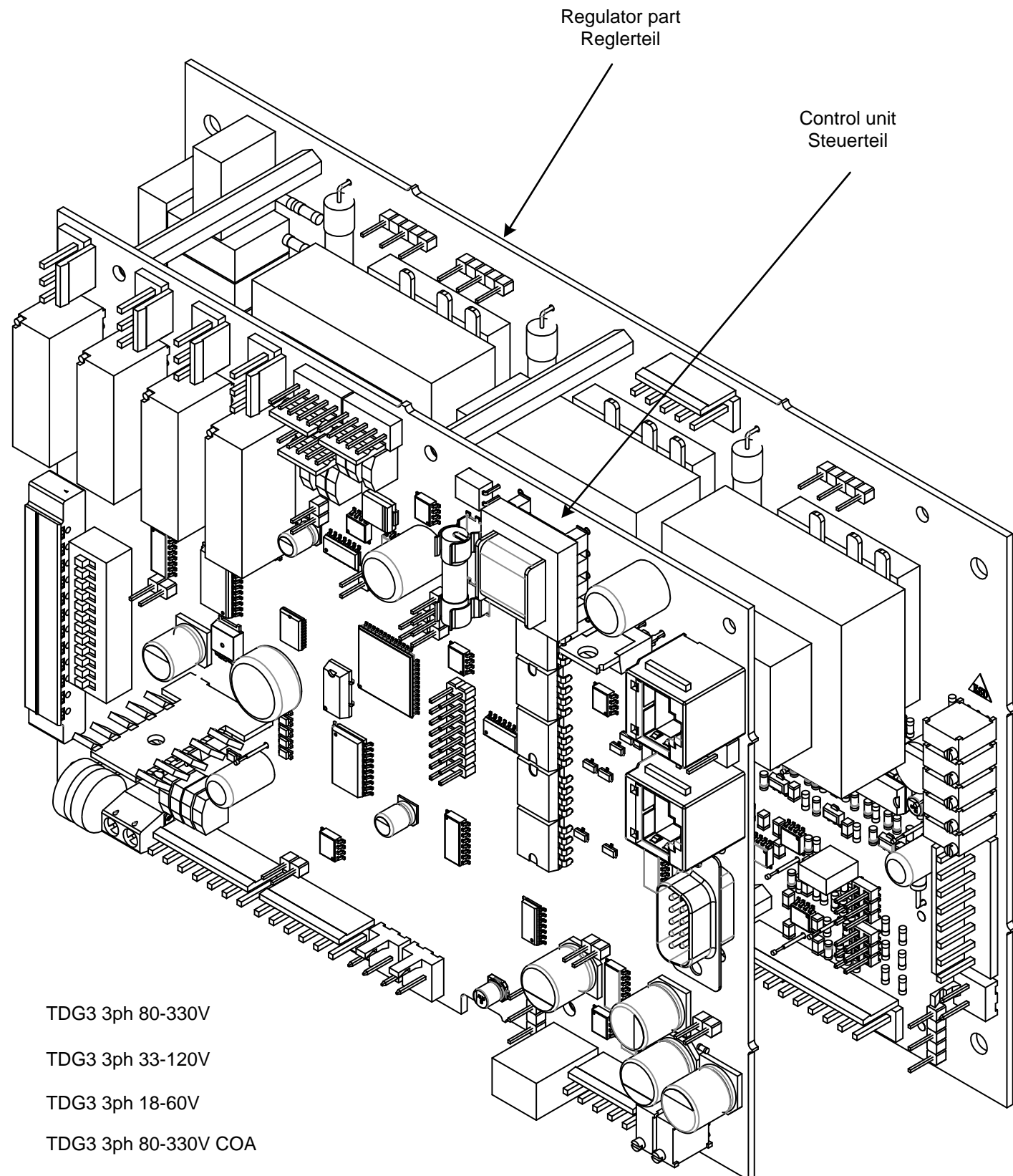


Copyright as per ISO 16016 to be observed!



- TN 10091560 TDG3 3ph 80-330V
- TN 10091561 TDG3 3ph 33-120V
- TN 10091562 TDG3 3ph 18-60V
- TN 10091563 TDG3 3ph 80-330V COA
- TN 10091564 TDG3 3ph 33-120V COA
- TN 10091565 TDG3 3ph 18-60V COA

c
24.07.2014
Rev. intern

Date	06.01.2014			
Drawn	HHUE			
Checked	MSCHL			
Rev.	Change	Date	Name	Approved

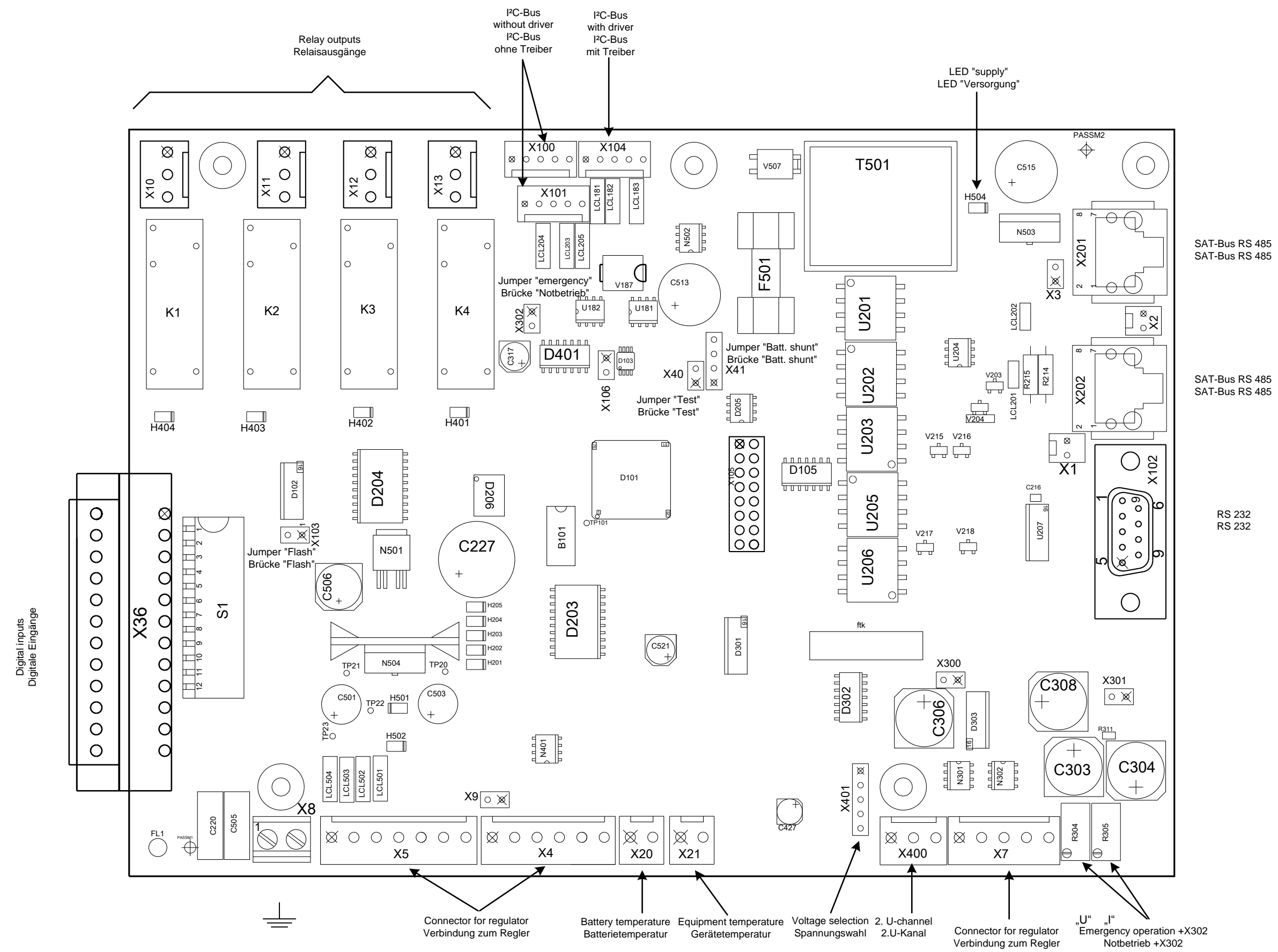


Layout Diagram Reglerbaugruppen

10091560.00M001

Sheet 1
5 Sh.

Copyright as per ISO 16016 to be observed!



c
24.07.2014
Rev. intern

Date	06.01.2014			
Drawn	HHUE			
Checked	MSCHL			
Rev.	Change	Date	Name	Approved

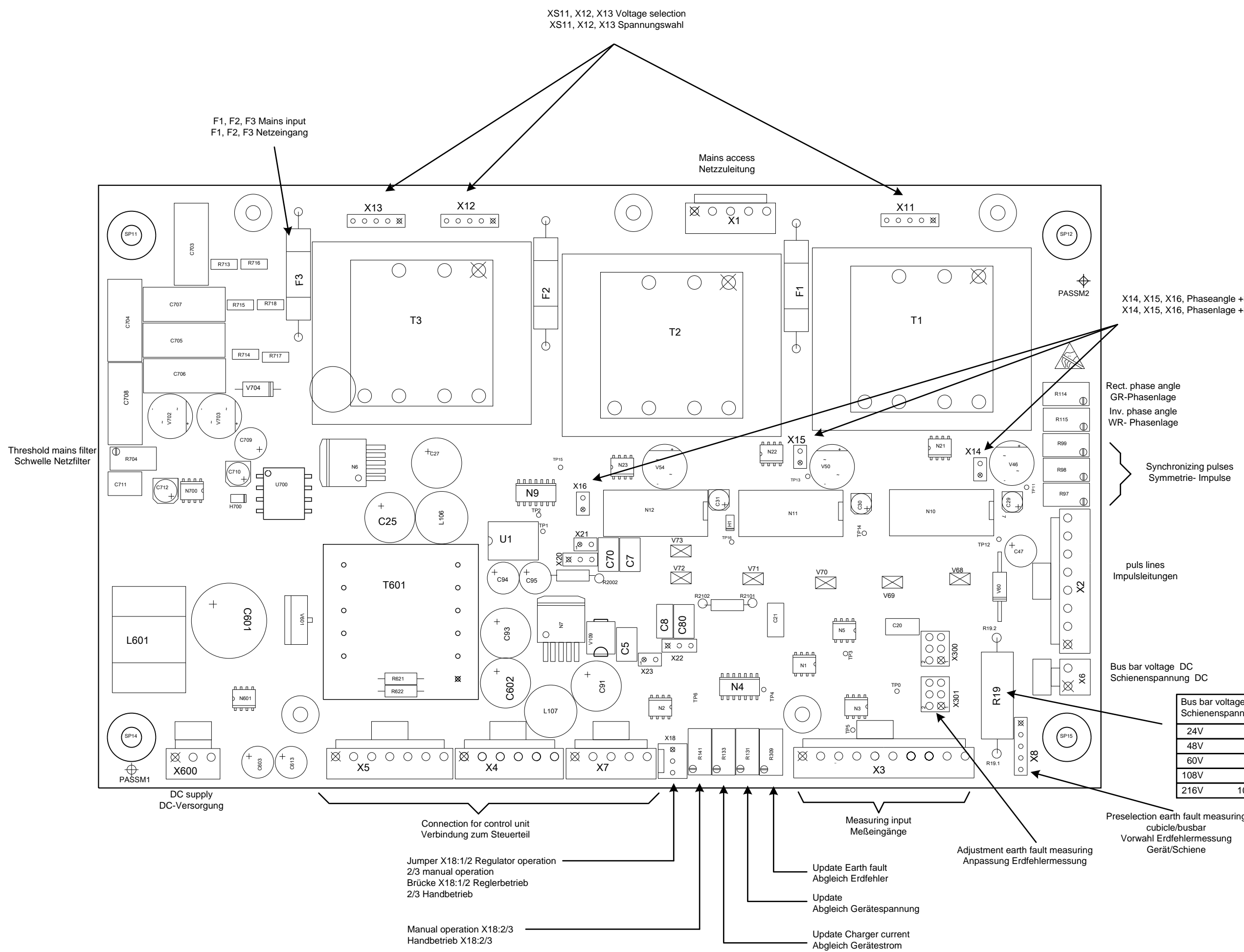


Layout Diagram Control unit

10091560.00M001

Sheet 2
5 Sh.

Copyright as per ISO 16016 to be observed!



c
24.07.2014
Rev. intern

Date	06.01.2014			
Drawn	HHUE			
Checked	MSCHL			
Rev.	Change	Date	Name	Approved



Layout Diagram Regulator part

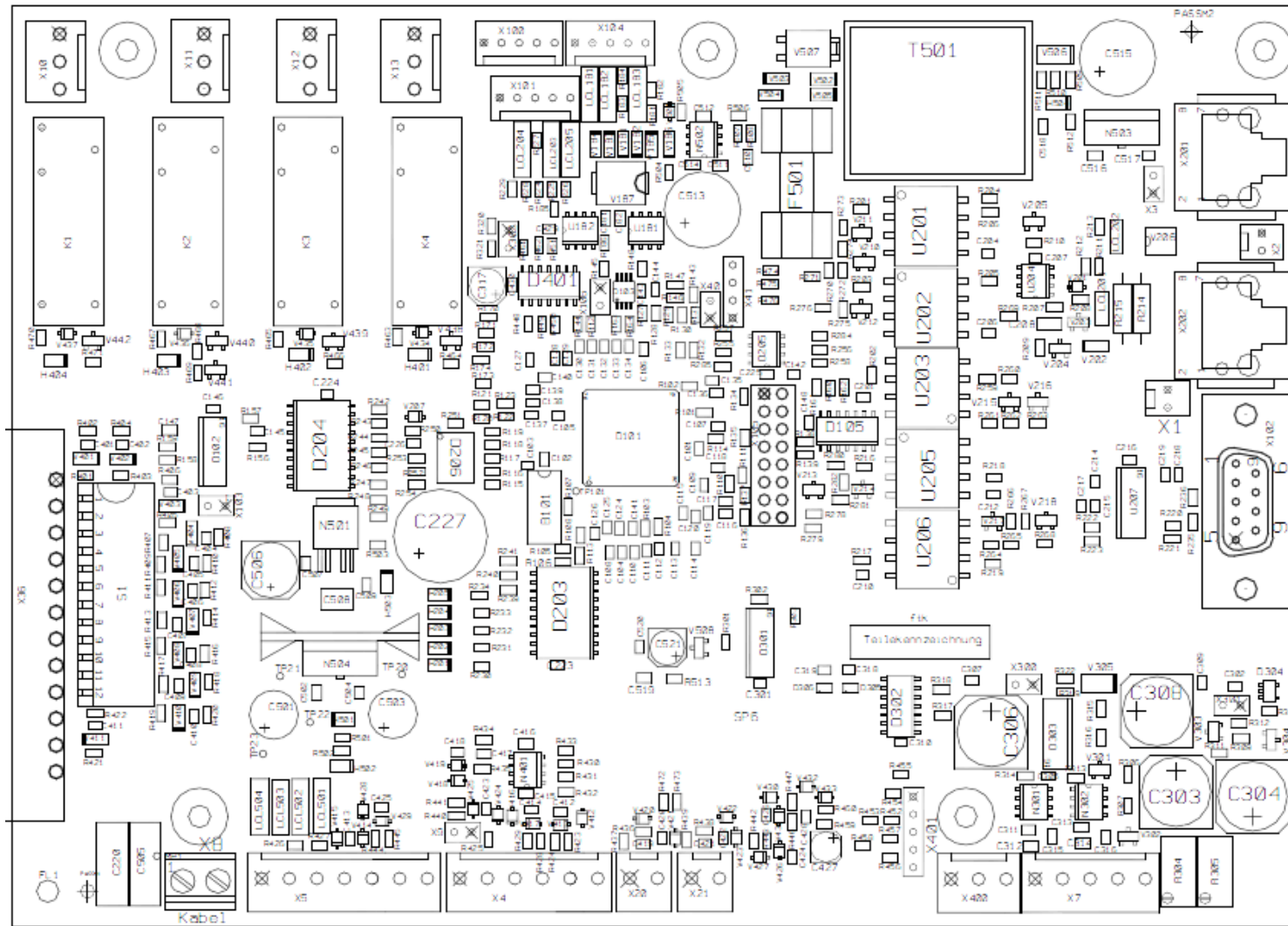
10091560.00M001

Sheet 3
5 Sh.

Leitungen ohne Treiber:
 Cable without driver:
 TN 539595 350mm
 TN 539700 500mm
 TN 535239 700mm
 TN 535240 1700mm
 TN 10121043 2500mm
 TN 10027128 4200mm

I²C-Bus
 with driver
 I²C-Bus
 mit Treiber

X104

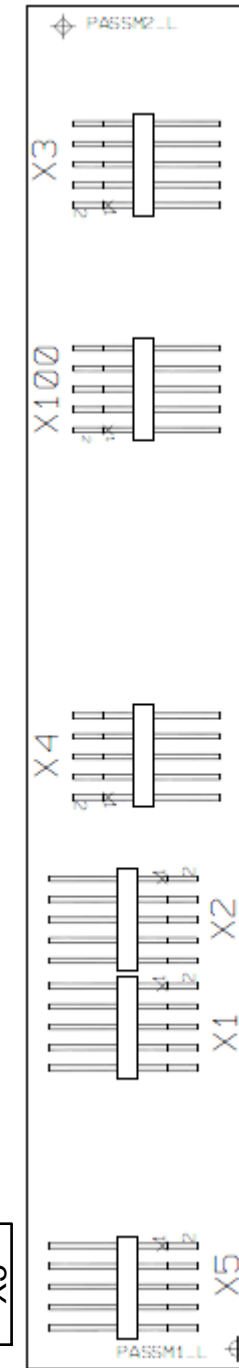


TN 10087074 Regulator Controller board
 Regler Steuerkarte

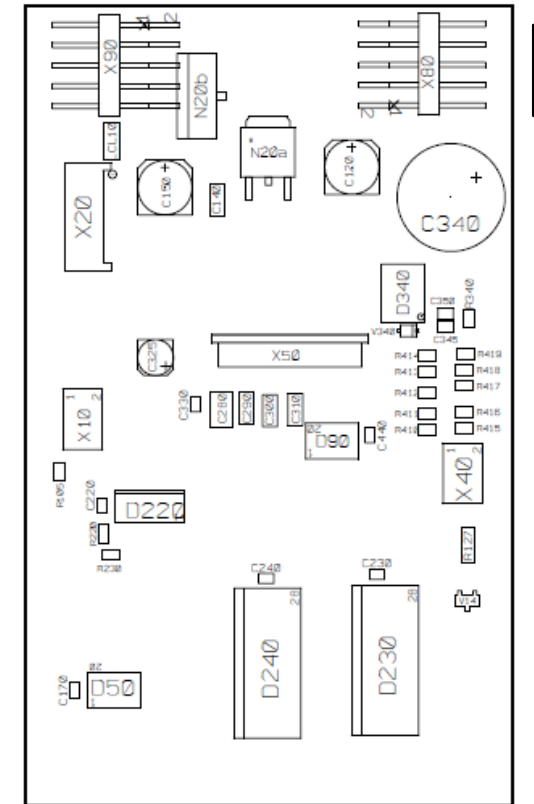
I²C-Bus
 with driver
 I²C-Bus
 mit Treiber

TN 10087787 LED-board I²C- Bus / Driver / SMD
 LED-Karte I²C- Bus / Treiber / SMD
 TN 10087075 LED-board I²C- Bus / Driver / RGB
 LED-Karte I²C- Bus / Treiber / RGB

-A31 Display and operating unit SMD
 TN 10105596 Anzeige- und Bedieneinheit SMD
 TN 10105665 Control and display unit RGB
 Anzeige- und Bedieneinheit RGB



X2



TN 548384 Display_DGMII

c
 24.07.2014
 Rev. intern

Date	06.01.2014			
Drawn	HHUE			
Checked	MSCHL			
Rev.	Change	Date	Name	Approved



I²C-Bus
 with driver

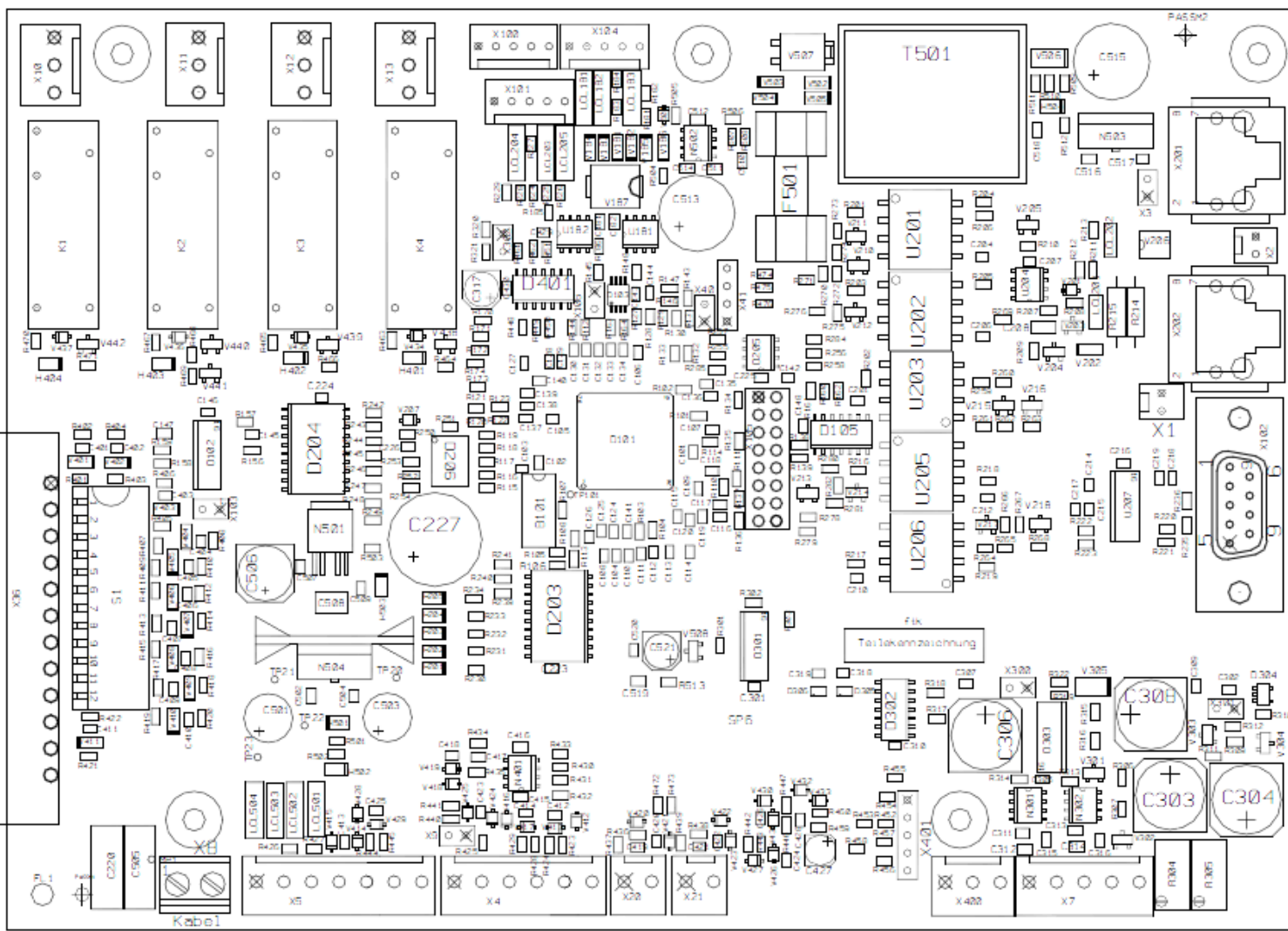
10091560.00M001

Copyright as per ISO 16016 to be observed!

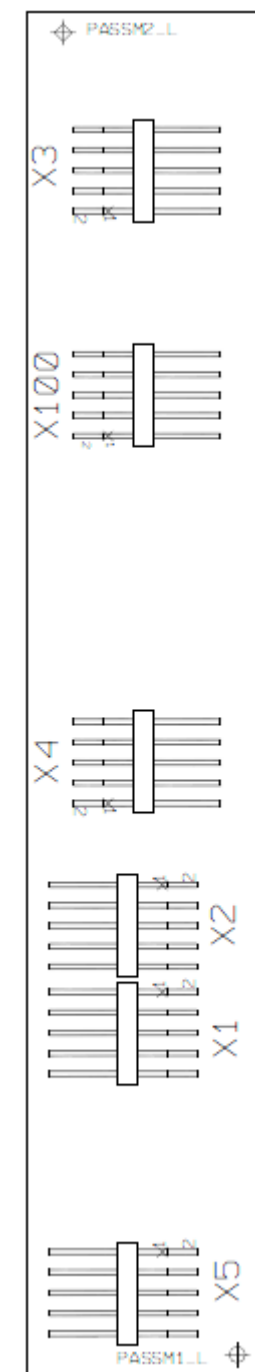
Wiring with Driver
 Leitungen Mit Treiber
 TN 539707 1500mm
 TN 539708 2500mm
 TN 10027129 5000mm

I²C-Bus
 without driver
 I²C-Bus
 ohne Treiber

X100/
 X101

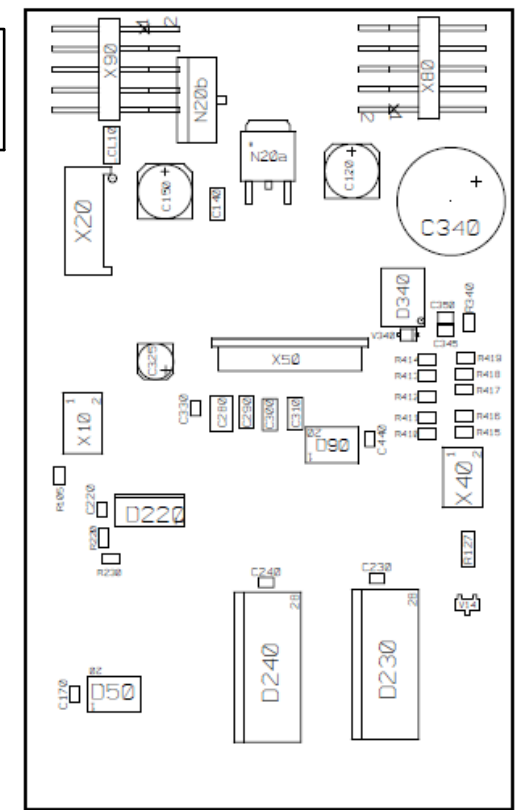


TN 10087074 Regler / Steuerkarte



- A31 TN 10105596 Display and operating unit SMD
Anzeige- und Bedieneinheit SMD
- TN 10105665 Control and display unit RGB
Anzeige- und Bedieneinheit RGB

- TN 10087787 LED-board I²C- Bus / Driver / SMD
LED-Karte I²C- Bus / Treiber / SMD
- TN 10087075 LED-board I²C- Bus / Driver / RGB
LED-Karte I²C- Bus / Treiber / RGB



TN 548384 Display DGMI I

c
 24.07.2014
 Rev. intern

Date	06.01.2014			
Drawn	HHUE			
Checked	MSCHL			
Rev.	Change	Date	Name	Approved



I²C-Bus
 without driver

10091560.00M001

Sheet 5
 5 Sh.