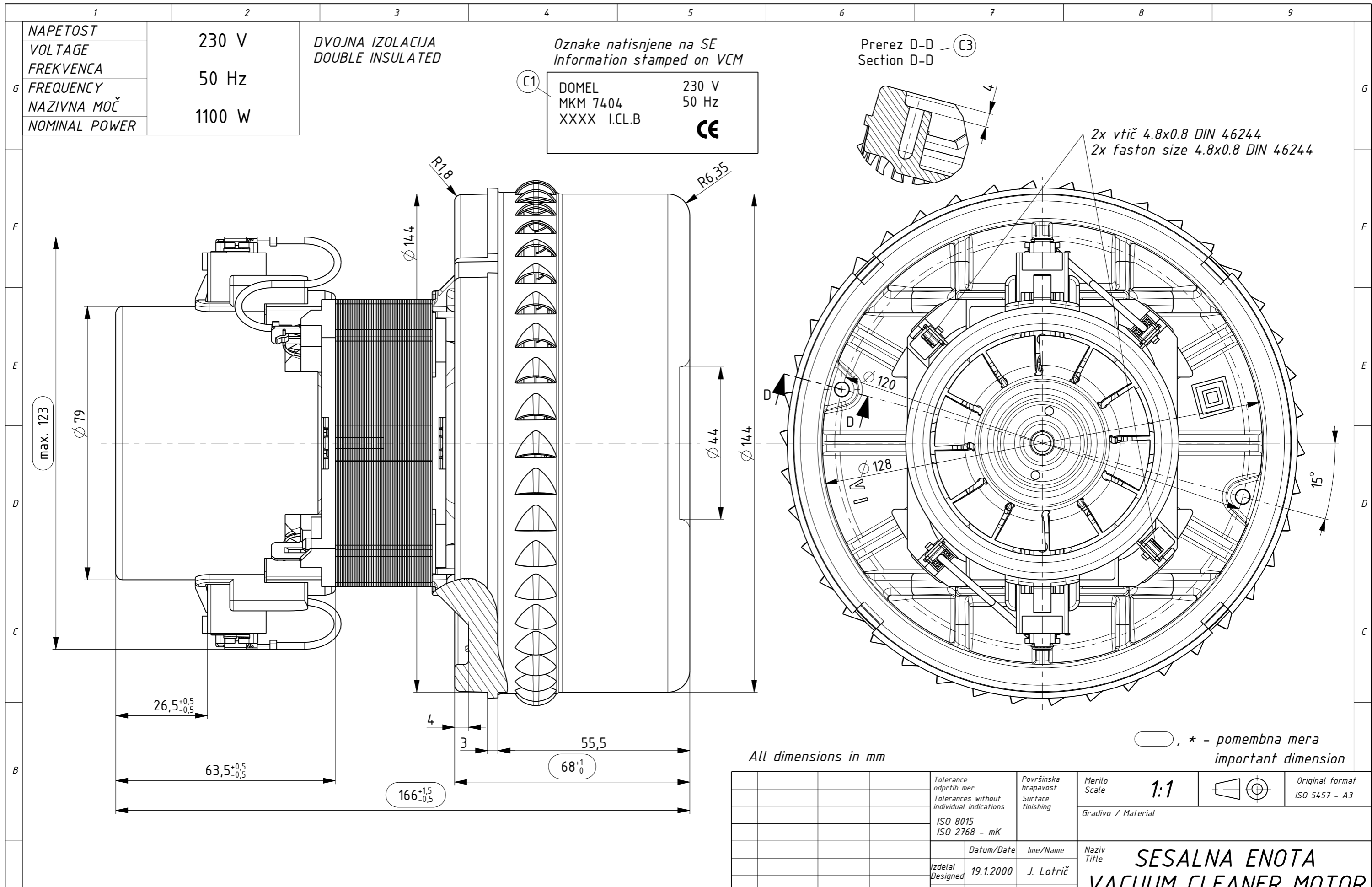


Izdelano s CAD/ProEngineer - ročno spreminjanje ni dovoljeno! Vsak prenos tretjim osebam ali uporaba v nedogovorjene namene ni dovoljena po zakonu o avtorskih pravicah. Made with CAD/ProEngineer - changing is not allowed! Any unauthorized copying of this drawing or unauthorized distribution of the information contained herein is prohibited.



OSNOVNE ZNAČILNOSTI		TYPICAL CHARACTERISTICS	
IZVEDBA	DVOSTOPENJSKA	FAN SYSTEM	TWO STAGE
VLEŽAJENJE	DVA KROGLIČNA LEŽAJA	BEARINGS	DUAL BALL
VRSTA PRETOKA	MIMO MOTORJA	DISCHARGE	BY PASS
SMER VRTENJA	LEVA	DIRECTION OF ROTATION	CCW

All dimensions in mm

Tolerance odprtih mer Tolerances without individual indications ISO 8015 ISO 2768 - mK			Površinska hrapavost Surface finishing		Merilo Scale 1:1	Original format ISO 5457 - A3
Datum/Date			Ime/Name		Gradivo / Material	
Izdelal Designed 19.1.2000			J. Lotrič		Naziv Title SESALNA ENOTA VACUUM CLEANER MOTOR MKM 7404	
Pregl. Verified 8.3.2013			J. Rihtaršič		Koda Code 492.3.404	
C3	10813	08.03.13	I. Potočnik	DOMEL Otoki 21, 4228 Železniki, Slovenija	List Sheet 3+	
B5	6786	05.11.03	J. Luznar		Stran Page 1	
A0	5384	19.01.00	S. Zgaga		4923404000_SESALNA_ENOTA	
Ozn. Mark	Št. obvestila Nr. of notice	Datum Date	Ime Name			