

NOTICE  
THIS DRAWING IS THE PROPERTY OF QUALITROL COMPANY LLC AND IS LOANED ONLY ON THE CONDITION THAT IT WILL BE USED TO FACILITATE THE PURPOSE FOR WHICH INTENDED AND NOT BE REPRODUCED, COPIED OR OTHERWISE DISPOSED OF, AND IS NOT TO BE USED IN WHOLE OR PART FOR FURNISHING INFORMATION RELATIVE TO THE MAKING OF DRAWINGS, PARTS APPARATUS OR PARTS THEREOF, EXCEPT BY WRITTEN ORDER FROM QUALITROL COMPANY LLC.

MODEL  
NO.

208-023-01

NOTES:

1. BLACK AND WHITE ARE NORMALLY CLOSED WHEN ALARM SWITCH IS MOUNTED AND ARMED AS SHOWN.
2. WHEN DEVICE OPERATES: WHITE CLOSING ON GREEN AND OPENS ON BLACK
3. WHEN THE SWITCH RESET LEVER IS MAN. DEPRESSED: BLACK AND WHITE ARE CLOSED GREEN AND WHITE ARE OPEN
4. FINISH: ASA #70 LT GRAY EPOXY INDICATOR : YELLOW
5. OPERATING PRESSURE: 10 PSIG  $\pm$  1 PSIG (.70 BAR  $\pm$  .07)

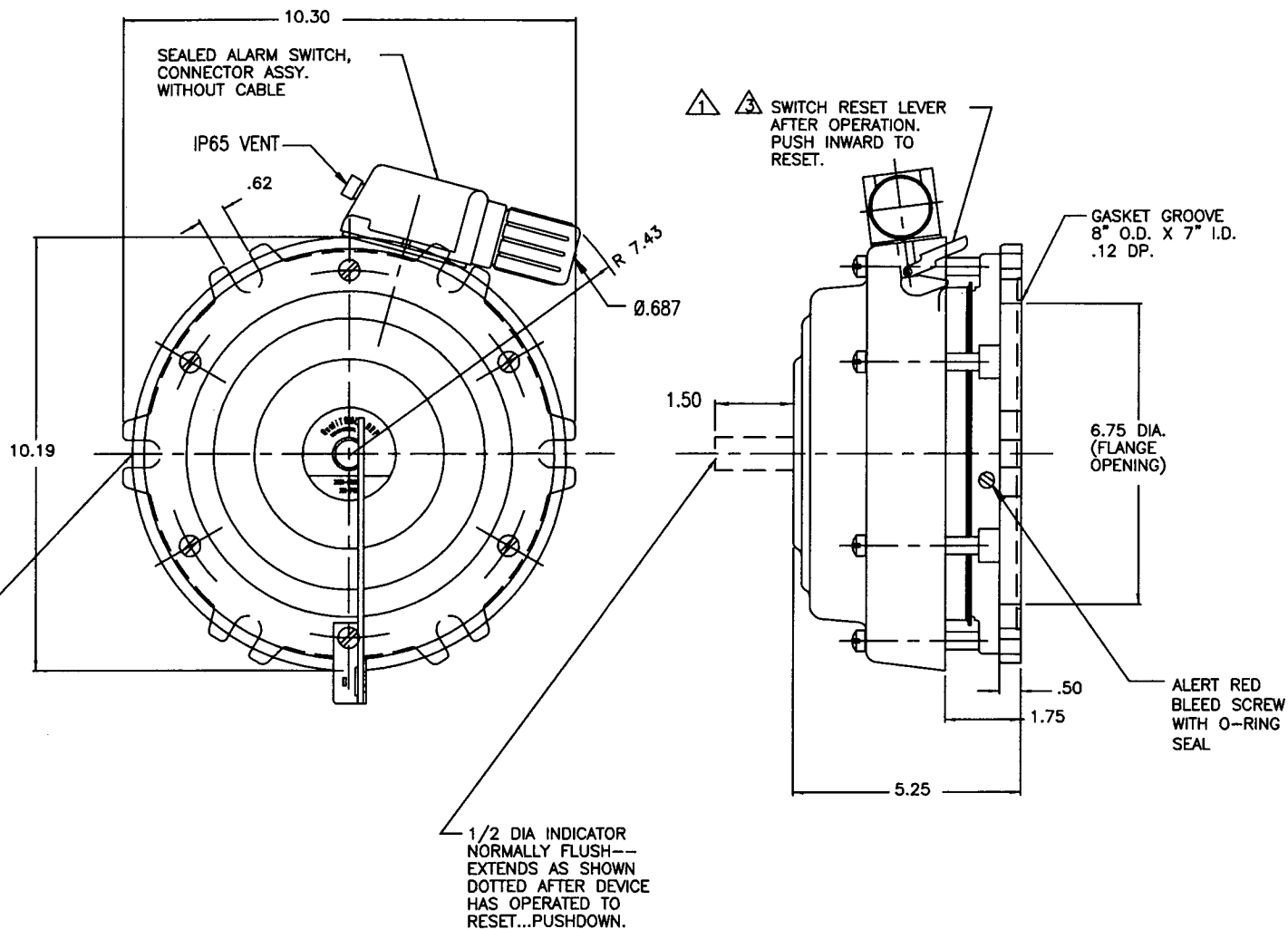
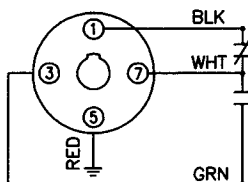
OPTIONAL  
SWITCH RATING

ENEC/CQC 11(3) A, 125/250 VAC  
UL/cUL: 11(3) A, 125/250 VAC  
UL FILE # E12252

(6) MTG. LUGS  
EQUALLY SPACED  
ON 9.25 B.C.

WIRING DIAGRAM

(SHOWN READY TO OPERATE)



-	7-9-13	ADD IP65 VENT & ALRM SWT; REV SWT RATING	31508
-	8-21-03	ADDED Ø.687 DIMENSION TO SWITCH NUT	24028
-	12-10-98	RELEASED	20041
LET	DATE	ALTERATION	C.N.

**QUALITROL**

DIMENSIONS AND TOLERANCES IN  
ACCORDANCE WITH ASME Y14.5M-1994

PH. (585) 586-1515  
FAX (585) 377-0220  
1385 FAIRPORT ROAD  
FAIRPORT, NY 14450  
FORM 0-473 REV. F 04/06/06

TITLE: PRESSURE RELIEF DEVICE  
W/ BLEED SCREW

MODEL  
NO.

208-023-01