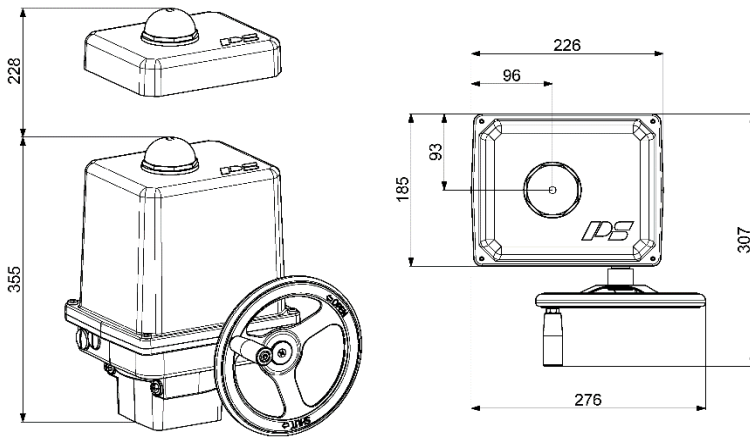


Electric Quarter Turn Actuator

PSQ203



weight: approx. 11.1 kg without accessories

250 Nm
Switching Torque
125 Nm Modulating Torque ¹

20 s - 69 s
Operating Time/90°

Flange
F07 + F10

Modulating Actuator
Class C
EN 15714-2

Enclosure IP67
EN 60529

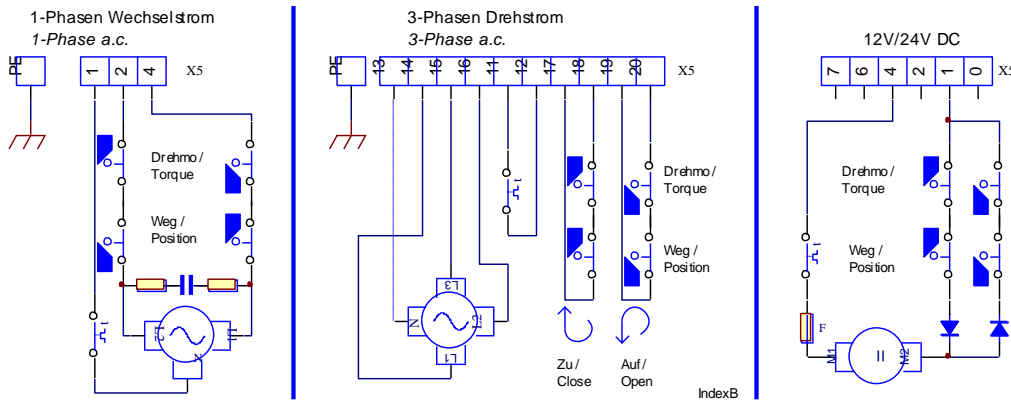
Operating Time/90°	20 s [50Hz] / 17 s [60Hz]				16 s	PSQ203 250Nm
Power Supply [V]	230 VAC 1~	115 VAC 1~	24 VAC 1~	400 V 3~	24 VDC	
Frequency [Hz]	50 / 60	50 / 60	50 / 60		-	
Rated Current [A]	0.45	1.2	5.5		3.2	
Maximum Current [A]	0.95	1.8	9		3.8	
Power Consumption) ² [W]	100	130	130		77	
Duty Cycle IEC 60034-1	S2 30 min / S4 50% ED - 1200c/h				see left	
Ambient Temperature [°C]	-20°C to +80°C (S2) / -20°C to +60°C (S4)				see left	
Overvoltage Category	II					
Motor Protection	Thermo Switch				Multifuse	
Operating Time/90°	28 s [50Hz] / 23 s [60Hz]				PSQ203 250Nm	
Power Supply [V]	230 VAC 1~	115 VAC 1~	24 VAC 1~	400 V 3~		24 VDC
Frequency [Hz]	50 / 60	50 / 60	50 / 60	50 / 60		
Rated Current [A]	0.32	0.61	2.9	0.15		
Maximum Current [A]	0.39	0.73	3.5	0.19		
Power Consumption) ² [W]	73	69	69	64		
Duty Cycle IEC 60034-1	S2 30min / S4 50% ED @ 25°C - 1200c/h					
Ambient Temperature [°C]	-20°C to +80°C (S2) / -20°C to +60°C (S4)					
Overvoltage Category	II					
Motor Protection	Thermo Switch) ³					
Operating Time/90°	69 s [50Hz] / 57 s [60Hz]				60 s	PSQ203 250Nm
Power Supply [V]	230 VAC 1~	115 VAC 1~	24 VAC 1~	400 V 3~	24 VDC	
Frequency [Hz]	50 / 60	50 / 60	50 / 60	50 / 60	-	
Rated Current [A]	0.27	0.57	2.7	0.12	1.3	
Maximum Current [A]	0.33	0.68	3.3	0.15	2.5	
Power Consumption) ² [W]	62	64	64	51	30	
Duty Cycle IEC 60034-1	S2 30min / S4 50% ED @ 25°C - 1200c/h					
Ambient Temperature [°C]	-20°C to +80°C (S2) / -20°C to +60°C (S4)					
Low Temperature Version	-40°C to +60°C optional					
Overvoltage Category	II					
Motor Protection	Thermo Switch) ³				Multifuse	

¹ = Permissible average torque over the travel of 90°

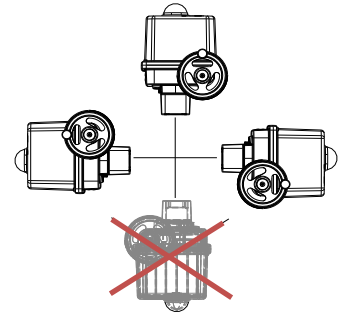
² = at switching torque and 50 Hz

³ = Thermo switch must be wired externally at 400 VAC 3~

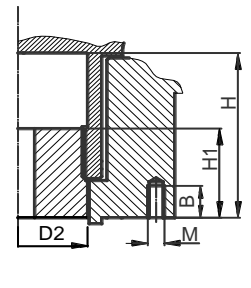
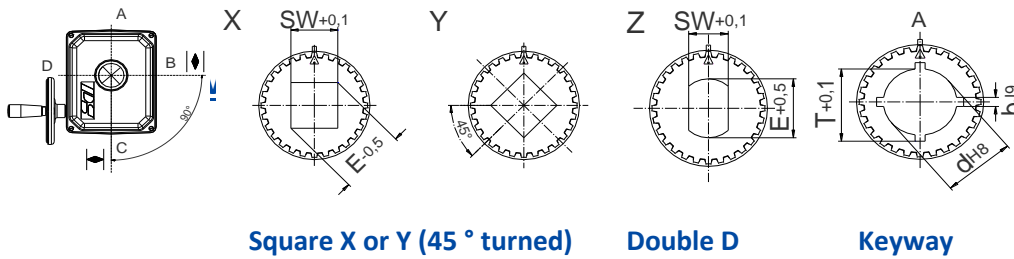
Wiring Diagramm



Mounting Position



Available Drive Bushes



	F07	F10
D2	47	47
H	60	60
H1	35	35
M	M8	M10
B	16	20

Please check drive bushes datasheet for available sizes!
Other customized drive bushes on request!

Accessories/ Options	Power Supply	230 VAC 1~	115 VAC 1~	24 VAC 1~	400 V 3~	24 VDC
	Add'l Position Switch 2WE	•	•	•	•	•
	Add'l Position Switches Gold	•	•	•	•	•
	Add'l Torque Switches 2DE	•	•	•	•	•
	Add'l Torque Switches Gold	•	•	•	•	•
	Positioner PSAP	•	•	•) ⁴	•) ⁵	
	Position Transmitter PSPT	•	•	•	•	•
	Space Heater HR	•	•	•	•) ⁶	•
	Potentiometer PD	•	•	•	•	•
	Reversing Starter WSM				•	
	Contacteur 01					
	Corrosion protection K2	Corrosion Protection K2 incl. Heating Resistor				
Increased enclosure IP	IP68) ⁷ incl. Heating Resistor and Corrosion Protection K2					

For more information and accessories, visit our website www.ps-automation.com!

• = available, for further information see respective datasheet

)⁴ = PSAP with external relay required

)⁵ = only to be used with reversing starter contactor

)⁶ = supply voltage 24 V or 115-230 V possible

)⁷ = IP68, no ingress of dust and suitable for continuous immersion in water up to 6 m and 96 h

Subject to changes!